



EFDA Series

EVOTEK Pressure Filters

Product Description

- Operating pressure up to 25 bar
- 400 l/min max. flow rate
- installation in line
- application in heavy duty, industry , construction and agricultural machines
- compliant with industry relevant ISO standards(see ISO test below)

Technical Specifications

Application

In-line duplex filter

Port Sizes:

Threaded Connections according to BSP and NPT standard in 1-¼" , 1-½" inch and SAE20/SAE24 threads
Flange Connections in SAE DN40 for 3000psi

Flow Rate:

max. 400 l/min

Operating Pressure:

max. 25 bar

Burst Pressure:

min. 75 bar

Element Collapse Pressure:

10 bar Fibreglass
30 bar Wire Mesh

By-pass Opening Pressure:

$\Delta p = 3.5 \text{ bar} \pm 0.5 \text{ bar}$ or $\Delta p = 7 \text{ bar} \pm 0.5 \text{ bar}$

Clogging indicator setting:

$\Delta p = 2.5 \text{ bar} \pm 10\%$ or $\Delta p = 5 \text{ bar} \pm 10\%$

Material

Seals:

NBR or FPM (-10°C to 100°C)

Filter Head:

Aluminum

Filter Bowl:

Aluminum

Compatibility:

Suitable for mineral oils, lubrication oils, non-flam fluids, synthetic and rapidly biodegradable oils (for use with water or other fields please contact our technical department)

Tested according to ISO standards:

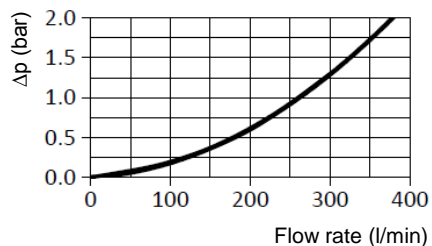
ISO2941 Collapse/burst resistance
ISO2942 Fabrication integrity
ISO2943 Material compatibility integrity
ISO3723 Method for end load test
ISO3724 Flow fatigue characteristics
ISO3968 Pressure Drop vs. Flow Rate
ISO16889 Multi-Pass Test

EFDA Pressure Filter Series

Pressure Drop Graphs (Δp)

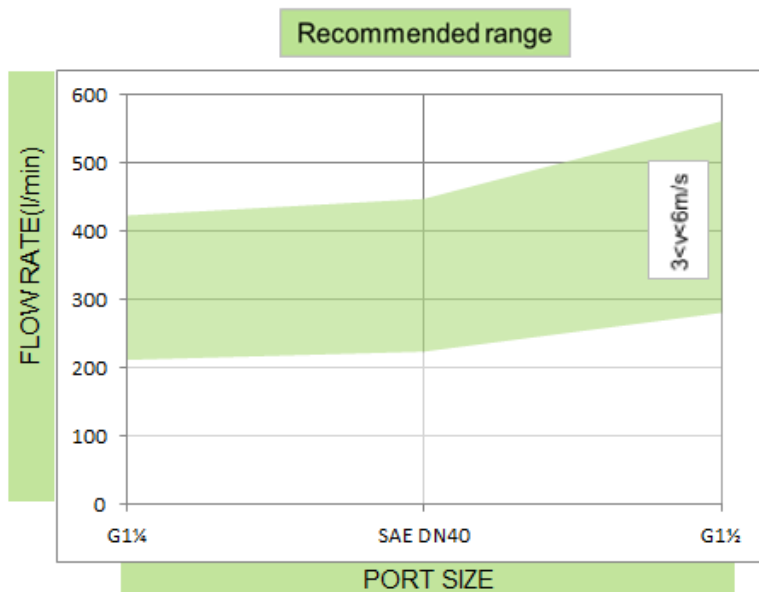
Pressure Drop of Filter Housing only

EFDA5, EFDA7 & EFDA10



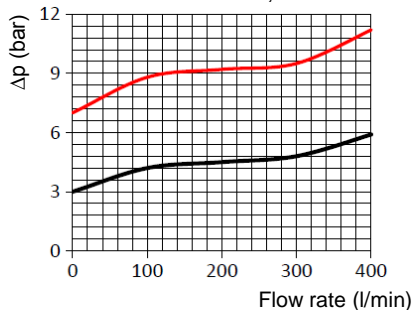
Graph of oil flow velocity

(we recommend to select size of the filter considering range of oil velocity between 3 to 6 m/s for return series)



Pressure drop graph on by-pass valve

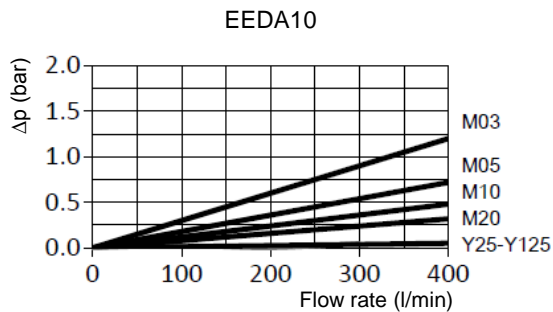
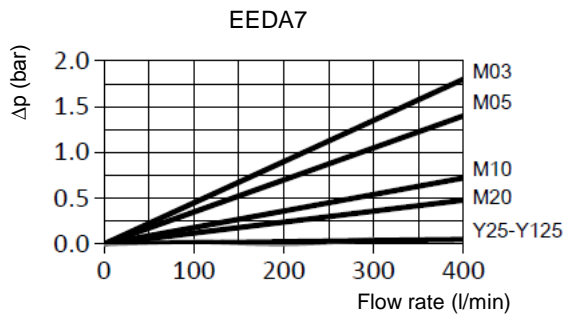
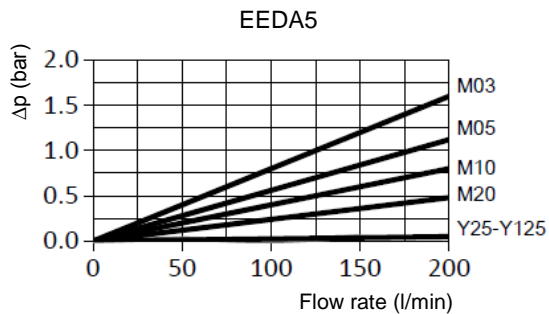
EFDA5, 7 & 10



EFDA Pressure Filter Series

Pressure Drop Graphs (Δp)

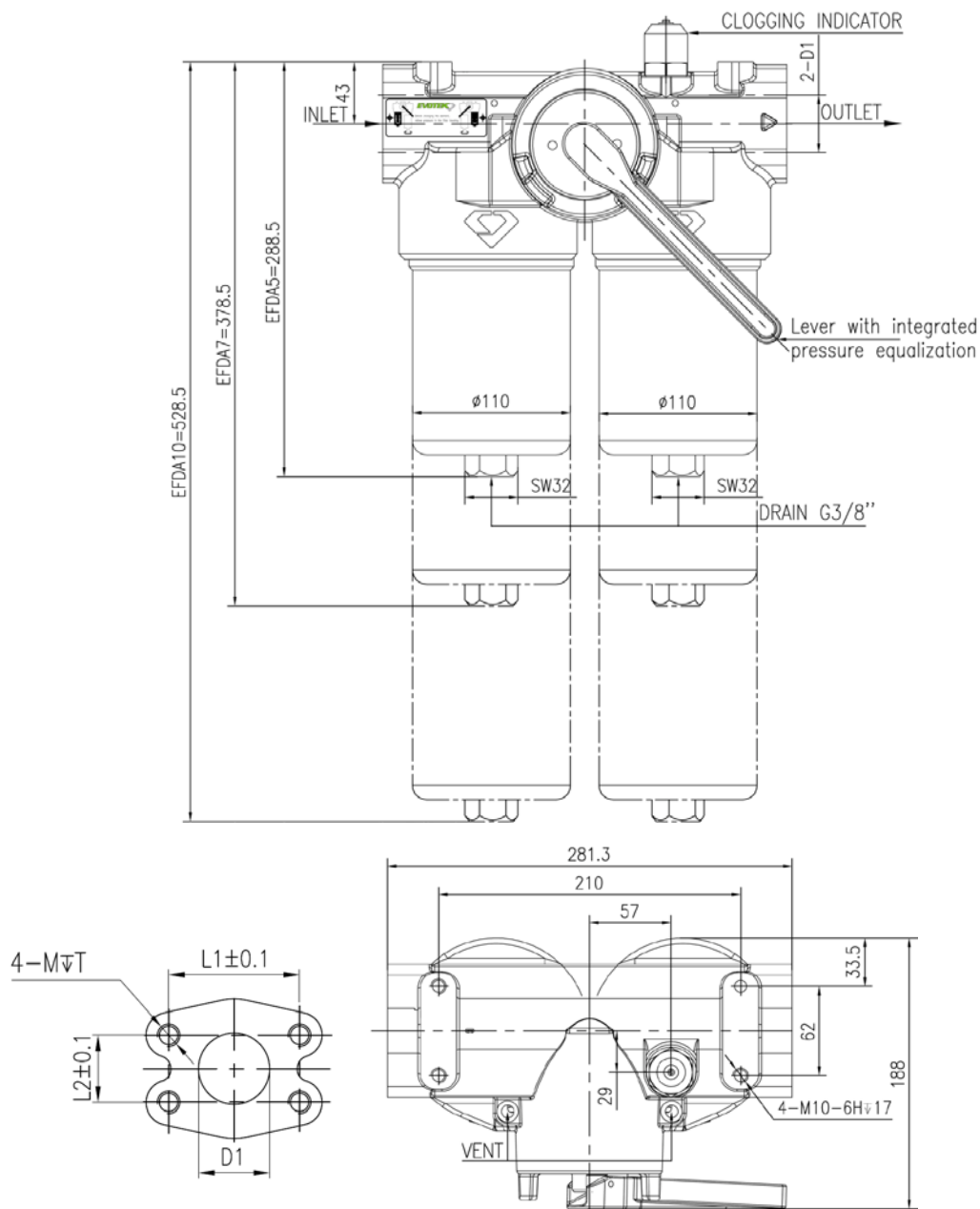
Pressure Drop with Clean Filter Elements (M and Y filter media)



EFDA Pressure Filter Series

Technical Drawings and Dimension

EFDA5,7&10



Connection Port
(BSP/NPT/SAE)
inch

Type	D1	L1	L2	M	T
EFDA5	1¼", SAE20				
EFDA7	1½", SAE24	69.9	35.7	12	23
EFDA10	SAE DN40 3000 psi				

www.evotek-hyd.com



EFDA Pressure Filter Series

Order Codes

Filter Assembly Series	A	B	C	D	-	E	-	F	G	Element Series	A	D	E
EFDA	5	BE	09	B	-	M10	-	V25		EEDA	5	B	M10

Select the code for each filter (or element) feature according to your requirements and place it in the sequence (see example above) to create the corresponding product order code.

A Size Flow Rate

5	160 l/min
7	250 l/min
10	400 l/min

B Connection Ports

BE	BSP 1-¼"
BF	BSP 1-½"
NE	NPT 1-¼"
NF	NPT 1-½"
A20	SAE20
A24	SAE24
FE	SAE DN40 3000psi

C By-pass Valve

00	NO
09	3.5 bar
12	7 bar
X	Special

D Seal

B	NBR
V	FPM

E Media Material Filtration Collapse Pressure

M03	Fibreglass	5µm	21 bar
M05	Fibreglass	7µm	21 bar
M10	Fibreglass	12µm	21 bar
M20	Fibreglass	21µm	21 bar
Y25	Wire Mesh	25µm	30 bar
Y60	Wire Mesh	60µm	30 bar
Y90	Wire Mesh	90µm	30 bar
Y125	Wire Mesh	125µm	30 bar

F Indicator

00	No	Connection
V25	2.5bar Visual indicator	M20*1.5 Thread
E25	2.5bar Visual/ electrical	M20*1.5 Thread
V50	5.0bar Visual indicator	M20*1.5 Thread
E50	5.0bar Visual / electrical	M20*1.5 Thread

G special

RL	Opposite direction
----	--------------------

This image shows a single sheet of white paper with horizontal ruling lines. The lines are evenly spaced and run across the width of the page. There are no margins, text, or other markings on the paper.